

## Selworthy Learning Support Centre

### Opening Hours

Monday

9:00am - 1:00pm

Tuesday

9:00am - 1:00pm

Wednesday

9:00am - 5:00pm

Thursday

9:00am - 5:00pm

Friday

Closed

Opening hours

Monday to Friday  
(Term time only)

Telephone:

01823 335935

Email:

[SelworthyLSC@educ.somerset.gov.uk](mailto:SelworthyLSC@educ.somerset.gov.uk)

### **Additional Information**

You are welcome to drop in during our opening times for a drink and a browse.

Sometimes it is helpful, if you have specific requests, to telephone ahead of your visit so we can do some preparation for you.

Annual memberships are available for schools, residential settings, organisations and parents outside of Selworthy School that care for someone with additional needs.

Membership will include:-

- The loan of any equipment and books
- Symbol resources such as a feelings book or keyring (there may be an additional charge for bespoke symbol resources such as a personalised timetable or booklet)
- Help to find and access support groups

If you would like a membership pack please contact us and we will be happy to email or post one to you.

Selworthy Learning Support Centre



Selworthy Road  
Taunton  
Somerset  
TA2 8HD



Managers:

Sue Fancourt and Angela Smith

Telephone:

01823 335935

Email:

[SelworthyLSC@educ.somerset.gov.uk](mailto:SelworthyLSC@educ.somerset.gov.uk)

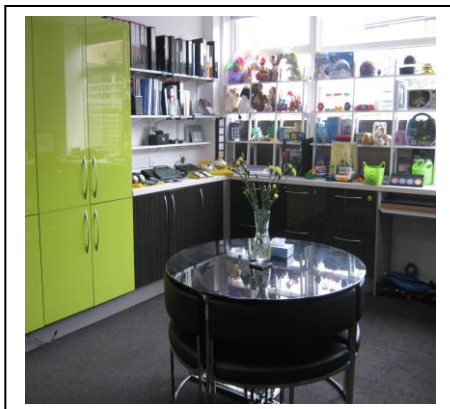


## ***About the Selworthy Learning Support Centre (LSC)***

The LSC is available to anyone with an interest in additional needs.

We offer a welcoming environment where you can come for a drink and a chat, to look at the resources and equipment we have on offer and discuss your specific needs. We house a library of the latest professional publications and educational media as well as a range of books.

The LSC is designed to be flexible as well as visually inviting and relaxing. This enables us to work supportively and collaboratively with professionals, parents and our local community to ensure the best possible provision for children, young people and adults with additional needs.



## ***LSC Meeting Room***

We also have a meeting room, with the capacity to seat 14 people. The simplicity of the design along with the interactive screen offers a professional environment to conduct meetings and this space is available to hire.



### ***Some of the equipment available to loan***

- Sensory Toys and Equipment
- Huge variety of switches
- Switch activated toys.
- IPADs /Wii/Nintendo DS
- A wide selection of keyboards and mouse options
- Communication aids - including Proxtalkers, MegaBee and recordable switches
- Weighted items
- A wide range of books and Professional publications
- EAL Resources

## ***Specialist Support***

At Selworthy we are very fortunate to have a range of specialists who we can access for advice. We have a Communication Specialist, an Educational Psychologist, a Music Therapist and a Sensory Specialist.

## ***Support for Schools***

In addition to the LSC membership, Selworthy School offer an outreach service to other schools - our class teachers have a wealth of knowledge and experience. A member of our teaching staff may visit your setting to observe and offer practical advice to help you support a child with additional needs.